

KS4 Information and Options Evening 2024

“...something for everyone...”

REGENTS PARK



Community College

Respect Pride Creativity Challenge

Curriculum: Our Intent

- Broad and balanced and inclusive
- Full KS3
- Opportunity to excel academically, creatively, physically and practically
- Love of learning; not an exams factory
- Ethos: respect; pride; creativity and challenge
- Develop core skills and build knowledge - prepare them for Post-16 and beyond
- Opportunity to access EBACC
- PSHE and Careers Programme
- Alternative pathway for some students as support

...our students, our context...

REGENTS PARK



Community College

Respect Pride Creativity Challenge

Qualifications Offered

GCSEs

- General Certificate of Education
- Graded 1-9
- Exams at end of course in Y11
- Level 2

BTEC

- Business and Technology Education Council
- More work-related
- Divided into units
- Coursework and exam
- Level 2

OCR Cambridge Nationals

- Similar to BTEC
- Work-related
- 50% cwk & 50% exam
- Level 2

“...something for everyone...”

Alternative Provision:

- mix of qualifications including ELCs, ASDAN, Construction course, swimming qualifications.

REGENTS PARK



Community College

Respect Pride Creativity Challenge

CORE: Subjects which all students study

English Language & Literature 2 GCSEs	+	Maths 1 GCSE
...our students, our context...		
Core Science 2 GCSES	+	Religious Studies 1 GCSE

REGENTS PARK



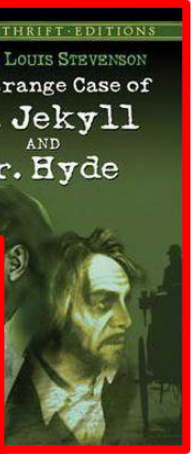
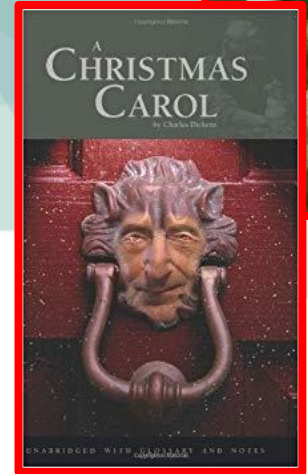
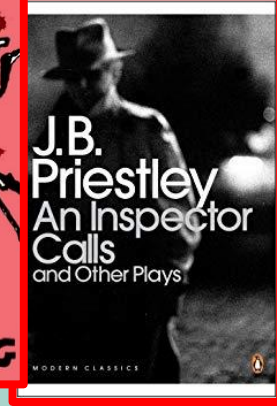
Community College

Respect Pride Creativity Challenge

English

Exam Board	Edexcel
Exam / Coursework	100% exam

Topics / Texts / Units	Fiction and Imaginative Writing
	Non-fiction and Transactional Writing
	Shakespeare
	Post-1914 Literature
	19th Century Novel Poetry since 1789



REGENTS PARK



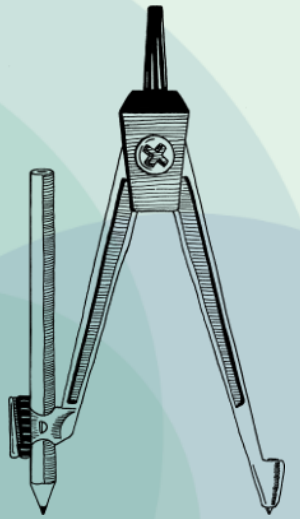
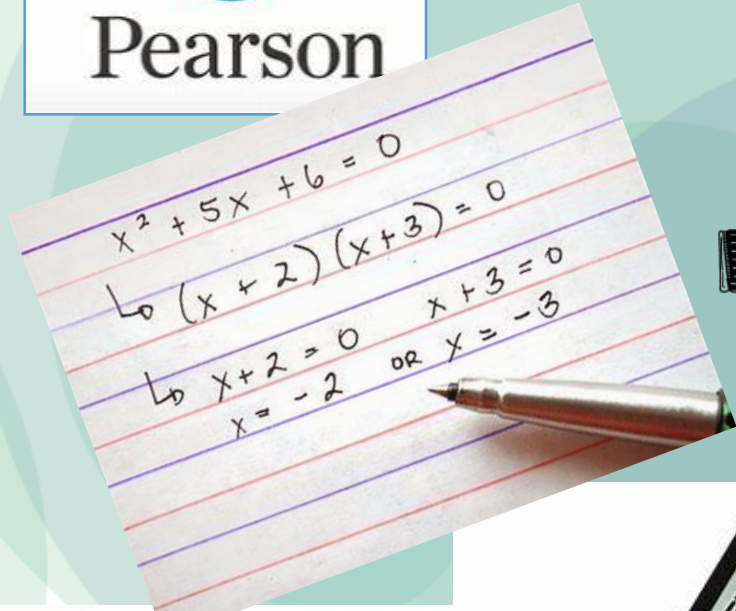
Community College

Respect Pride Creativity Challenge

Maths

Exam Board	Edexcel
Exam / Coursework	1MA1 Higher / Foundation tier

Topics / Texts / Units	Number
	Algebra
	Geometry
	Statistics
	Probability
	Ratio and Proportion



Foundation (grades 1-5)	Paper 1 Non-calculator 33.3% weighting 1 hour and 30 minutes 80 marks	Paper 2 Calculator 33.3% weighting 1 hour and 30 minutes 80 marks	Paper 3 Calculator 33.3% weighting 1 hour and 30 minutes 80 marks
	Paper 1 Non-calculator 33.3% weighting 1 hour and 30 minutes 80 marks	Paper 2 Calculator 33.3% weighting 1 hour and 30 minutes 80 marks	Paper 3 Calculator 33.3% weighting 1 hour and 30 minutes 80 marks



REGENTS PARK



Community College

Combined Science

Exam Board	AQA
Exam / Coursework	100% exams- 6 Exams (2x Bio, 2x Chem, 2x Physics,

Topics / Texts / Units	Biology 1: Cell biology, organisation, infection and response, bioenergetics
	Biology 2: Homeostasis, genetics and evolution, ecology
	Chemistry 1: Atomic structure and periodic table, bonding, quantitative chemistry
	Chemistry 2: Chemical changes, rates of reaction, organic chemistry, analysis, earth's resources, atmosphere
	Physics 1: Energy, electricity, matter, atomic structure
	Physics 2: forces, magnets and electromagnets, waves



REGENTS PARK



Community College

Respect Pride Creativity Challenge

Religious Studies

Exam Board	AQA
Exam / Coursework	100% Exam - 2 Papers each 1hr 40 min



Units Paper 1	Christian Beliefs
	Christian Practices
	Hindu Beliefs
	Hindu Practices.
Units Paper 2	Religion, Life and Death
	Religion, Crime & Punishment
	Religion, Human Rights & Social Justice
	Religion, Peace and Conflict



REGENTS PARK



Community College

Respect Pride Creativity Challenge

CHOICE ONE

...our students, our context...

History

OR

Geography

REGENTS PARK



Community College

Respect **Pride** Creativity **Challenge**

History AQA

Exam Board	AQA
Exam / Coursework	100% Exam (4 papers)

Topics / Texts / Units	Democracy & Dictatorship: Germany 1889-1945
	Conflict & Tension in Asia 1945-1972
	Britain, Power & the People c1170 to the present day
	Elizabethan England 1558-1603



REGENTS PARK



Community College

Respect Pride Creativity Challenge

Geography AQA

Exam Board	AQA
Exam / Coursework	100% Exam (3 papers)

Topics / Texts / Units	Paper one: Physical Environment
	Paper Two: Human Environment
	Paper three: Geographical Applications Unseen fieldwork, human and physical fieldwork enquiry and geographical skills



REGENTS PARK



Community College

Respect Pride Creativity Challenge

Pathway 1: Able Linguist

“...something for everyone...”



REGENTS PARK



Community College

Respect Pride Creativity Challenge

MFL

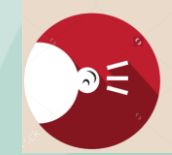
AQA

Exam Board	AQA
Exam / Coursework	100% exam: (4 parts: Reading, Writing, Speaking and Listening)

Topics / Texts / Units	New Specification beginning September 2024
	<ul style="list-style-type: none">• Theme 1: People and lifestyle• Theme 2: Popular culture• Theme 3: Communication and the world around us



speaking



listening



reading



writing



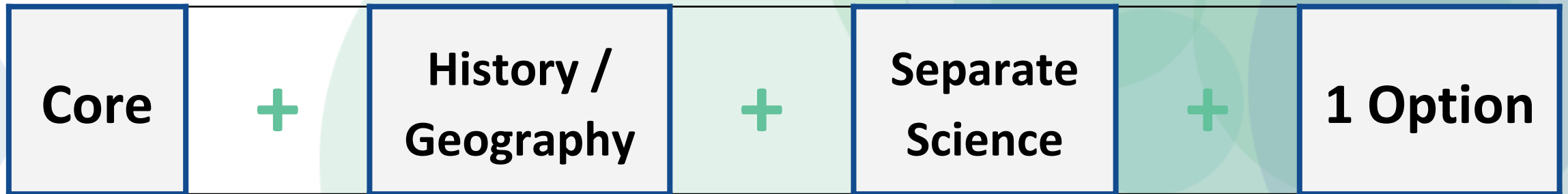
REGENTS PARK



Community College

Respect Pride Creativity Challenge

Pathway 2: Separate Scientist



REGENTS PARK



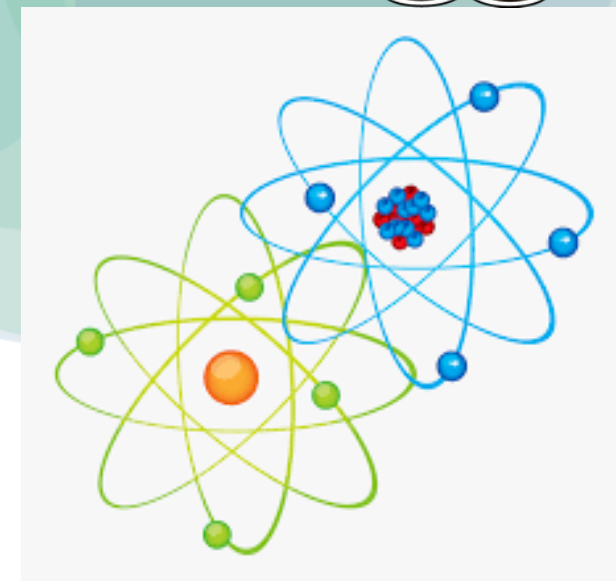
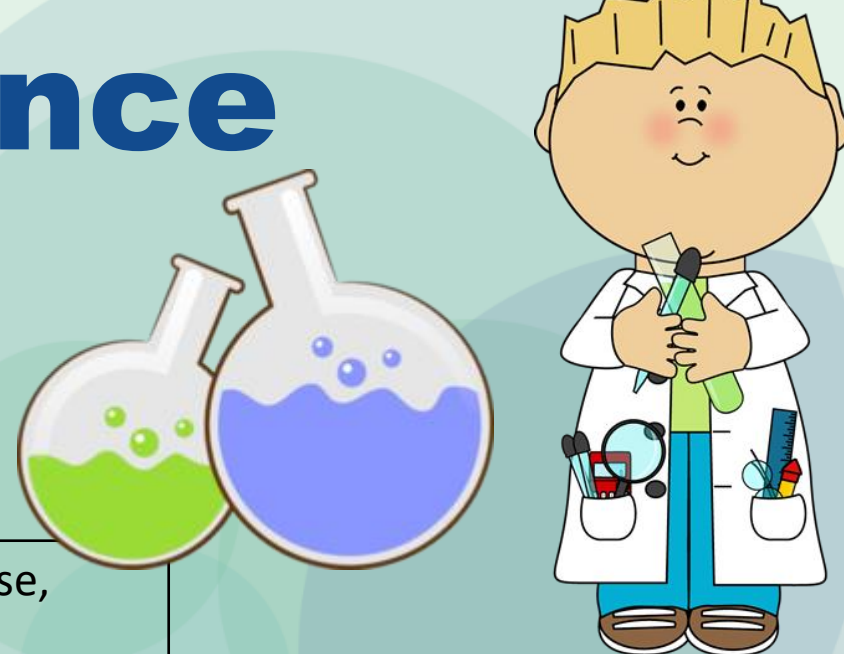
Community College

Respect Pride Creativity Challenge

GCSE Separate Science

Exam Board	AQA
Exam / Coursework	100% exams- 6 Exams (1 hr 45 mins each), 2 Bio, 2 Chem, 2Physics. Each science= 1 GCSE each

<p>Topics / Texts / Units</p> <p>Mostly the same as combined- just contains more topics within these</p>	Biology 1: Cell biology, organisation, infection and response, bioenergetics
	Biology 2: Homeostasis, genetics and evolution, ecology
	Chemistry 1: Atomic structure and periodic table, bonding, quantitative chemistry
	Chemistry 2: chemical changes, rates of reaction, organic chemistry, analysis, earth's resources, atmosphere
	Physics 1: Energy, electricity, matter, atomic structure
	Physics 2: forces, magnets and electromagnets, waves, space



REGENTS PARK



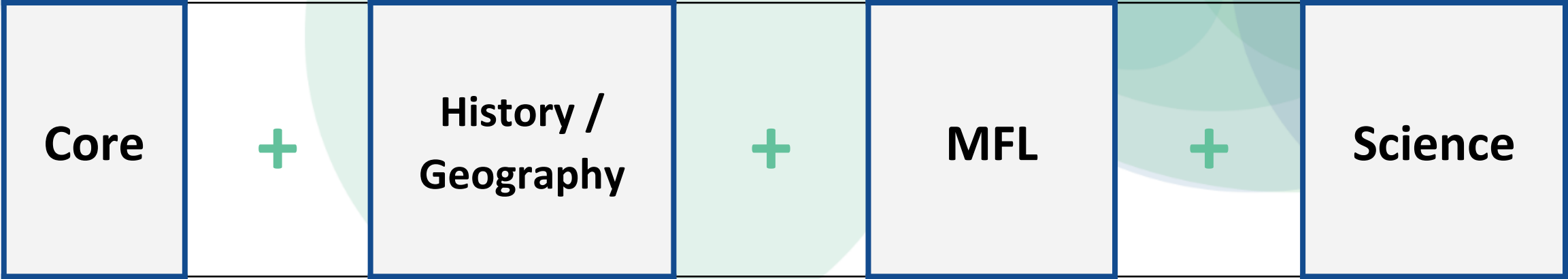
Community College

Respect Pride Creativity Challenge

Pathway 3: Academic Route

“...something for everyone...”

This pathway is for our most able students with identified ability in both MFL and Science. This pathway will support students interested in further and higher education, possibly University.



Pathway 4: Double Option

...Our students, our context..



REGENTS PARK



Community College

Respect Pride Creativity Challenge

Option Subjects

Students will be able to choose from:

- GCSE Separate Science
- GCSE MFL
- BTEC Sport
- BTEC Performing Arts
- GCSE Sociology
- GCSE Film Studies
- GCSE Business Studies
- OCR Cambridge Nationals Enterprise & Marketing

- GCSE Computer Science
- OCR Cambridge Nationals Creative iMedia
- GCSE Fine Art
- GCSE 3D Design
- GCSE Textiles
- GCSE Photography
- BTEC Health and Social Care
- OCR Cam Nat Hospitality and Catering

“...something for everyone...”

REGENTS PARK



Community College

Respect Pride Creativity Challenge

BTEC Sport

Exam Board	Pearson
Exam / Coursework	40% exam and 60% coursework (which includes filming)

Topics / Texts / Units	Component 1 - Preparing participants to take part in sport and physical activity
	Component 2 - Taking part and improving other participants sporting performance
	Component 3 - Fitness for sport and exercise



REGENTS PARK



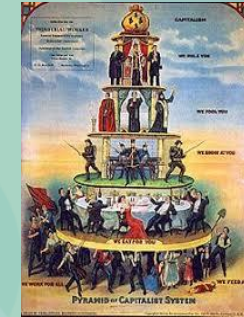
Community College

Respect Pride Creativity Challenge

GCSE Sociology

Exam Board	AQA
Exam / Coursework	100% exam (2 papers)

Topics / Texts / Units	Families and Households
	Education
	Crime and Deviance
	Social Stratification
	Research Methods



REGENTS PARK



Community College

Respect Pride Creativity Challenge

BTEC Health & Social Care

Exam Board	Cambridge National
Exam / Coursework	1 Exam unit, 2 coursework units



Topics / Texts / Units	R033 - Supporting Individuals through life events
	R034 - Creative and therapeutic activities
	R032 - Principles of care in Health and Social care settings (exam)



REGENTS PARK



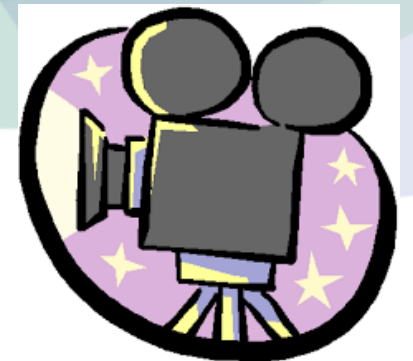
Community College

Respect Pride Creativity Challenge

GCSE Film Studies

Exam Board	WJEC Eduqas
Exam / Coursework	70% Exam (2 papers, 1hr 30 mins each), 30% NEA (creation & evaluation of screenplay).

Topics / Texts / Units	Attack the Block (cert 15) - Aesthetics
	Whiplash (cert 15) - Specialist Writing
	Tsotsi (cert 15) - Representation
	District 9 (cert 15) - Narrative
	Rebel Without A Cause (cert PG) & Ferris Bueller's Day Off (cert 12A) - Comparisons in Film Developments
	Film History



REGENTS PARK



Community College

Respect Pride Creativity Challenge

GCSE Business Studies

Exam Board	AQA
Exam / Coursework	100% exam (2 papers)

Topics / Texts / Units	Business in the real world
	Influence on Business
	Human resources
	Marketing
	Operations
	Finance



REGENTS PARK

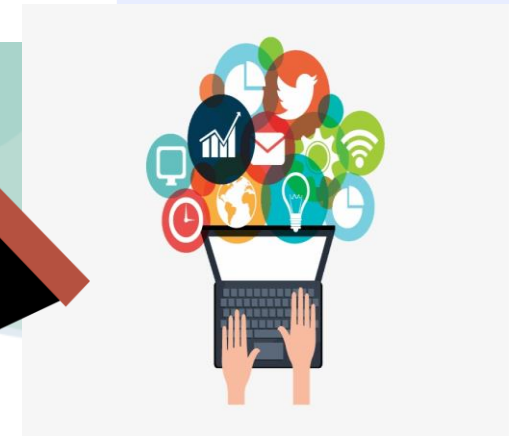
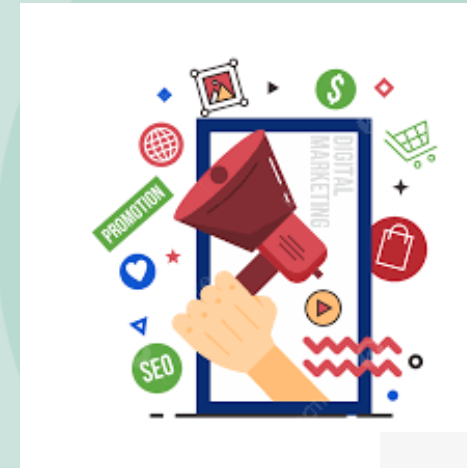


Community College

Respect Pride Creativity Challenge

OCR Cambridge National Enterprise & Marketing

Exam Board	OCR
Exam / Coursework	40% Exam, 60% NEA coursework (30% each in Design a Business proposal and Pitch a business proposal)
Topics / Texts / Units	Entrepreneurship and Market Research
	Developing a product design mix
	Risk and challenges of a new product
	Financial analysis
	Promotional campaign
	Develop and pitch a business proposal



REGENTS PARK



Community College

Respect Pride Creativity Challenge

GCSE Computer Science

Exam Board	OCR
Exam / Coursework	100% exam (2 papers 50% each))

Topics / Texts / Units	System Architectures
	Storage and data
	Computer Networks, connections & protocol
	Operating systems and Software
	Ethical, Legal, cultural & environmental impact
	Computational thinking
	Programming - in Python
	Boolean Logic
	Integrated Development Environment



REGENTS PARK



Community College

Respect Pride Creativity Challenge

OCR Cambridge Nationals: iMedia

Exam Board	OCR
Exam / Coursework	40% Exam, 60% NEA coursework (25% and 35% mix)

Topics / Texts / Units	Creative iMedia in the media industry
	Visual identity and digital graphics
	Interactive digital media
	IT skills in desktop publishing, photo editing and website creating



REGENTS PARK

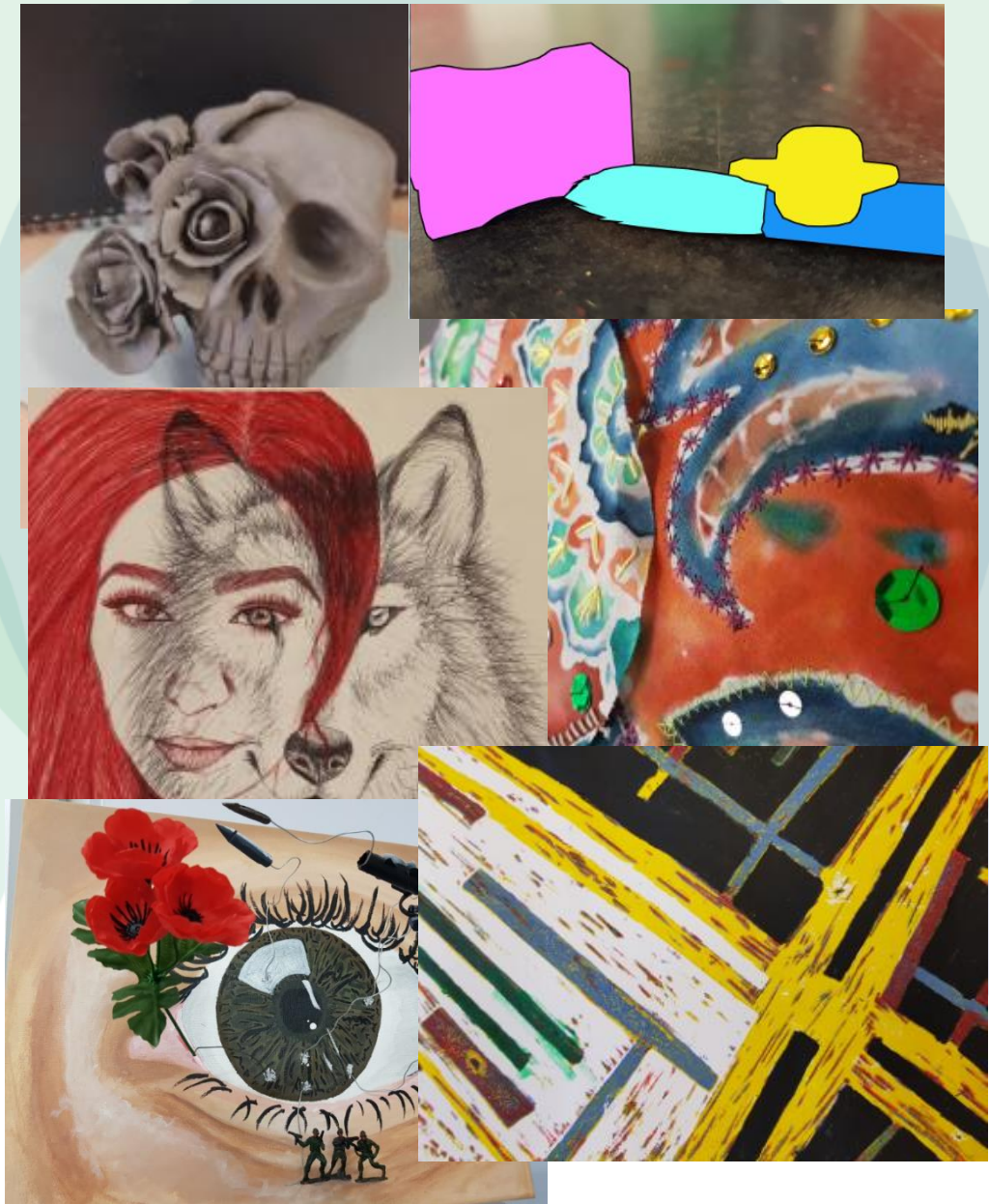


Community College

Respect Pride Creativity Challenge

GCSE Fine Art

Exam Board	AQA
Exam / Coursework	Exam 40% Coursework 60%
Topics / Texts / Units	Component 1 (60%) - 2 parts <ul style="list-style-type: none">“I, Me, Mine” - project about identityMini project on new materials (printing-making, painting, drawing and photography)
	Component 2 (40%) Externally set in January of Yr 11 and ends in a two day exam creating a final piece



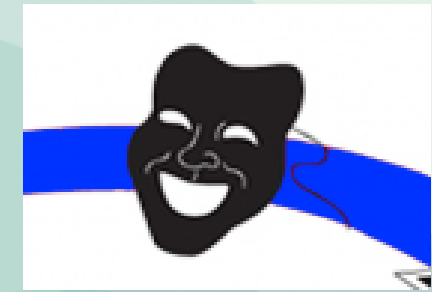
REGENTS PARK



Community College

Respect Pride Creativity Challenge

BTEC Performing Arts



Exam Board	WJEC
Exam / Coursework	60% Coursework 40% Exam
Topics / Texts / Units	<p>Three Areas: Performing (30%), Creating (30%) and Performance Arts in Practice (40%)</p> <p>Performing: Drama and Musical Theatre Creating: devised Drama/ Choreography Performance Arts in Practice externally set by the exam board</p>



Performing Arts



REGENTS PARK



Community College

Respect Pride Creativity Challenge

3D Design

Exam Board	AQA
Exam / Coursework	60% Coursework 40% Exam

Topics / Texts / Units	Component 1 (60%) two areas. One sustained project One mini project, learning new materials (clay, sculpture, photography, drawing, textiles etc...)
	Component 2 40% Externally set in January of Yr 11 Ends with two day exam creating a final piece



REGENTS PARK



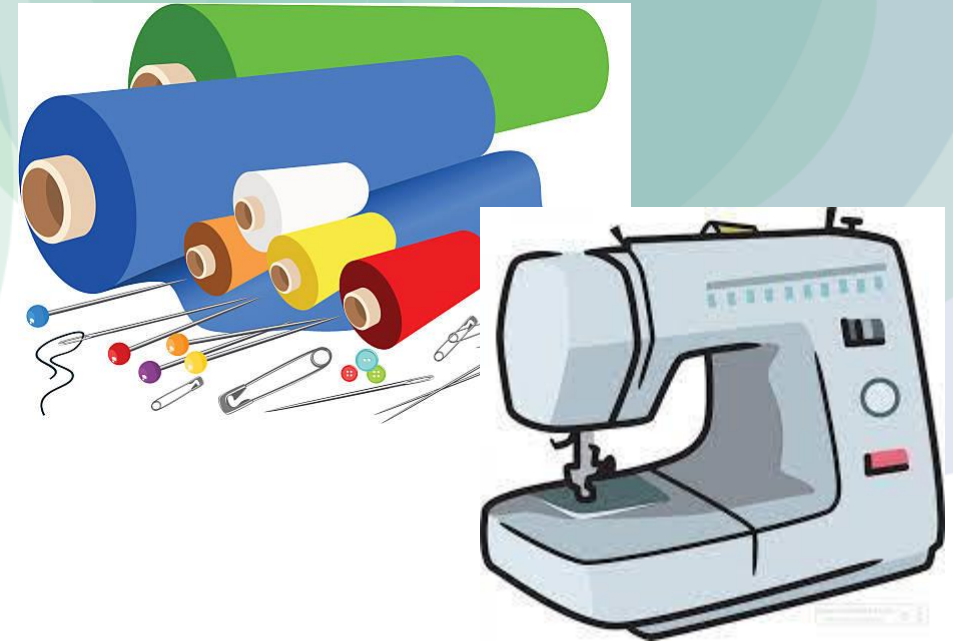
Community College

Respect Pride Creativity Challenge

GCSE Textiles

Exam Board	AQA
Exam / Coursework	60% Coursework 40% Exam

Topics / Texts / Units	Component 1 60% Two areas: 1 sustained project 1 mini project learning new materials (weaving, batik, hand sewing and machine sewing).
	Component 2 40% Externally set in January of Yr 11 Ends with two day exam creating a final piece



REGENTS PARK



Community College

Respect Pride Creativity Challenge

GCSE Photography

Exam Board	AQA
Exam / Coursework	60% Coursework 40% Exam

Topics / Texts / Units	Component 1 (60%) One sustained project One mini project learning new materials (photoshop, use of a DSLR camera, editing techniques and filming)
	Component 2 40%. Externally set in January of Yr 11 Ends with two day exam creating a final piece



REGENTS PARK



Community College

Respect Pride Creativity Challenge

Hospitality & Catering

Exam Board	WJEC
Exam / Coursework	40% Exam 60% Practical

Topics / Texts / Units	Unit 1 - Exam (40%)
	Unit 2 : Prepare a menu in response to brief. (60%)
	Students will look at Health and Safety, Food Preparation, Food Safety Laws, Business of Hospitality and Cook recipes.



REGENTS PARK



Community College

Respect Pride Creativity Challenge

Choosing a Subject

When choosing a subject, you should consider:

- Abilities, skills and talents
- Enjoyment
- Post-16
- Course requirement

You should not consider:

- The teacher
- Your friends

- No student forced to take a subject
- No student excluded from a subject

“...something for everyone...”

We cannot guarantee you will get your 1st choice, you will therefore be asked to choose 2 reserve choices.

What Now:

- Visit Subject Areas
- Y9 Subject Parents' Evening
- 1-1 meetings to support
- Options generated
- Confirmation of option choices
- Taster lessons
- 3 Week Window

...Our students, our context...

Want to Get Ahead?

Complete slip on the back expressing choices.

REGENTS PARK



Community College

Respect Pride Creativity Challenge

Regents Park Curriculum Offer

...something for everyone...

...our students, our context...

For the Maths Minded

- ♦ Maths
- ♦ Physics
- ♦ Computer Science
- ♦ Business Studies
- ♦ Further Maths (extra-curricular)



For Socially Conscious Students

- ♦ English Literature
- ♦ Religious Studies
- ♦ History
- ♦ Sociology
- ♦ Geography
- ♦ PSHE
- ♦ Health & Social Care



For Literate Learners

- ♦ English Language & Literature
- ♦ MFL / Home Language
- ♦ Film Studies
- ♦ Sociology
- ♦ History
- ♦ Drama



For Enterprise Experts

- ♦ Business Studies
- ♦ Enterprise and Marketing
- ♦ Geography
- ♦ Hospitality & Catering (Food)
- ♦ Careers Programme



For Literate Learners

- ♦ English Language & Literature
- ♦ MFL / Home Language
- ♦ Film Studies
- ♦ Sociology
- ♦ History
- ♦ Performing Arts



Alternative Curriculum

- ♦ Rebuild
- ♦ Jewellery-Making
- ♦ Boxing
- ♦ Work Experience
- ♦ Allotment
- ♦ ASDAN
- ♦ Swimming
- ♦ Cookery



For Practical People

- ♦ 3D Design
- ♦ Textiles
- ♦ Hospitality & Catering (Food)
- ♦ iMedia (IT)
- ♦ Chemistry



For Aspiring Academics

- ♦ Core Subjects
- ♦ Sociology
- ♦ Computer Science
- ♦ Business Studies



For Creative Characters

- ♦ Fine Art
- ♦ Textiles
- ♦ Photography
- ♦ 3D Design
- ♦ iMedia (IT)
- ♦ Textiles



For Sporty Souls

- ♦ Core PE
- ♦ BTEC Sport
- ♦ Sports Leaders
- ♦ Biology



For Performing People

- ♦ Performing Arts
- ♦ Arts Award



For The Teenage Traveller

- ♦ Geography
- ♦ MFL
- ♦ Religious Studies
- ♦ English
- ♦ Travel & Tourism



REGENTS PARK



Community College

Respect Pride Creativity Challenge