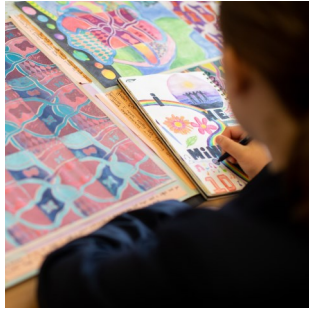


**Student Name: «Forename» «Surname»**

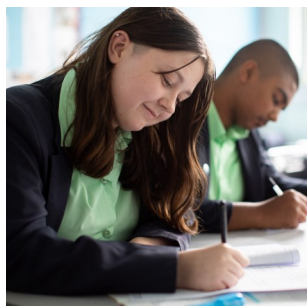
**Pathway: «Pathway»**



## **KS4 INFORMATION & OPTIONS EVENING 2024**

**29th February, 6:00pm**

***"...something for  
everyone..."***



# WELCOME & INFORMATION

---

Welcome to this year's KS4 Information and Options Evening for current Year 9.

At Regents Park, we pride ourselves on our broad and balanced curriculum. In KS3 students have studied a full range of subjects, laying a strong foundation for KS4 and more specialist study.

It is our intent that Years 10 and 11 still follow a broad curriculum which prepares them for Post-16 - whatever that might mean for them. We are also ambitious for our students and so you will see we have identified which pathways are most suitable for individuals, according to their skills and strengths. For our most academic students we strongly recommend the Academic pathway as this provides the best foundation for further and higher study.

The KS4 offer has been informed by our understanding of our students in our context and it is adapted year on year to meet the needs of different cohorts and as the world around us changes. We serve a wide demographic of students including those from different countries, cultures, with different talents, abilities and SEND. At Regents Park, there really is something for everyone.

We offer EAL students the opportunity to take a GCSE in their Home Language (where available) and also have an impressive Alternative Curriculum offered to students with SEND, but other identified students can dip into aspects of this. Children for whom this is applicable will be contacted separately by the SEND team.

Finally, our ethos underpins the KS4 offer and you will see opportunities for students to learn more about RESPECT; display PRIDE; be CREATIVE and experience CHALLENGE.

## OPTIONS PROCESS EXPLAINED

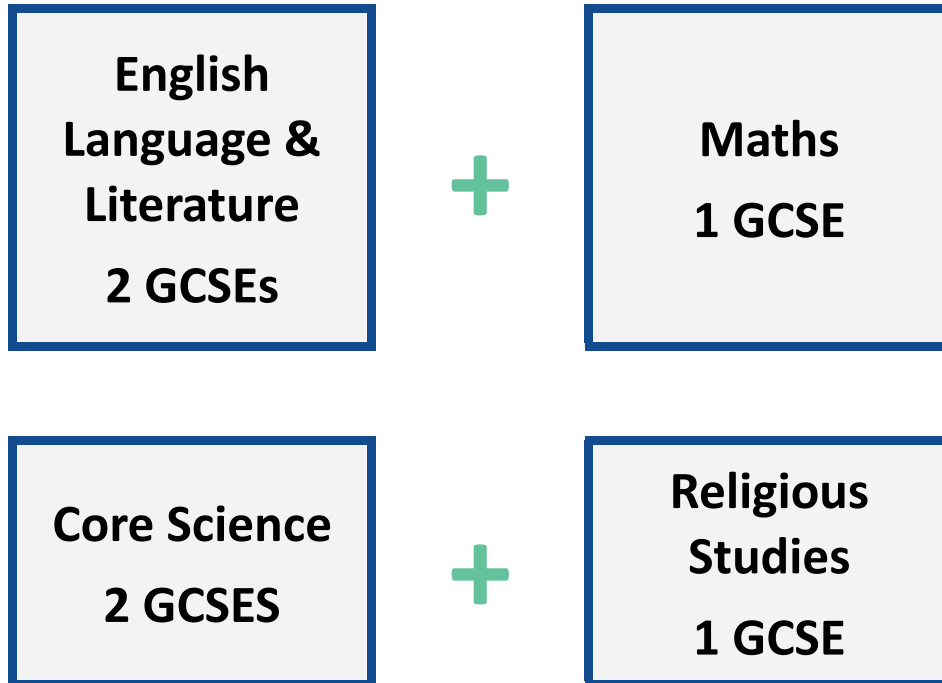
---

1. Able Linguists and Separate Scientists identified
2. KS4 Information & Options Evening
3. Year 9 Subject Parents' Evening
4. Students meet option team to make choices
5. Options finalised
6. Student choices confirmed with parents
7. Taster lessons
8. Three week window to change — Sept 2024

# CORE

---

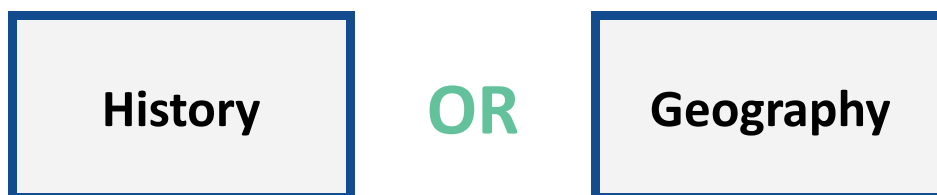
All students must take these subjects up to GCSE.



# CHOICE 1

---

All students must choose either History or Geography



A minority of students will be offered the chance to do Travel & Tourism as an alternative to History or Geography. Parents will be contacted to discuss this.

# PATHWAYS

Some students have been identified as “Able Linguists” and/or “Separate Scientists”. This means our MFL and Science Curriculum Areas think these children have particular ability for Languages and/or Science and are therefore advised to take these.

## PATHWAY 1: ABLE LINGUIST



## PATHWAY 2: SEPARATE SCIENTIST



## PATHWAY 3: ACADEMIC ROUTE

Our most academic students may have been selected for both MFL & Science. In this case, they will be unable to choose any additional options.



## PATHWAY 4: DOUBLE OPTION

We recognise that students have a whole range of skills, talents and abilities and our option subjects reflect this. They range from the more academic to more practical and the creative. Students in this pathway can choose 2 options.



*Our pathways are intended to guide students towards choices that match their academic ability. However, no child will be forced to follow a particular pathway nor will any child be excluded from a subject on the basis of ability. We put students at the heart of what we do and their enjoyment of learning matters more than school data.*

# OPTIONS 2024

“...something for everyone...”

Course	Exam Board	Exam / Coursework
English Language & Literature	Edexcel	100% Exam (2 papers per subject)
Maths	Edexcel	100% Exam (3 papers)
Combined Science	AQA	100% Exams (6 in total)
Religious Studies	AQA	100% Exams (2 in total)
History	AQA	100% Exam (4 in total)
Geography	AQA	100% Exam (3 papers)
GCSE Separate Science	AQA	100% Exams (6 in total - 2 Biology, 2 Chemistry, 2 Physics = 1 GCSE each)
MFL	AQA	100% Exam (4 parts - Reading, Writing, Speaking & Listening)
BTEC Sport	Pearson	40% Exam / 60% Coursework
BTEC Performing Arts	WJEC	60% Coursework / 40% Exam
GCSE Sociology	AQA	100% Exams (2 in total)
GCSE Film Studies	WJEC	70% Exam / 30% Coursework
GCSE Business Studies	AQA	100% Exam (2 papers)
OCR Enterprise & Marketing	Cambridge Nationals	40% Exam / 60% Coursework
GCSE Computer Science	OCR	100% Exam (2 papers)
OCR Cambridge Nationals iMedia	OCR	40% Exam / 60% Coursework
GCSE Fine Art	AQA	60% Coursework / 40% Exam
3D Design	AQA	60% Coursework / 40% Exam
GCSE Textiles	AQA	60% Coursework / 40% Exam
GCSE Photography	AQA	60% Coursework / 40% Exam
BTEC Health & Social Care	Cambridge National	1 Exam Unit / 2 Coursework Units
Hospitality & Catering	WJEC	60% Practical / 40% Exam

Respect

Pride

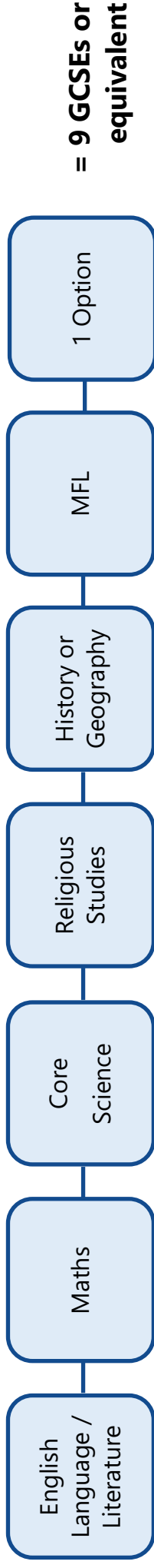
Creativity

Challenge

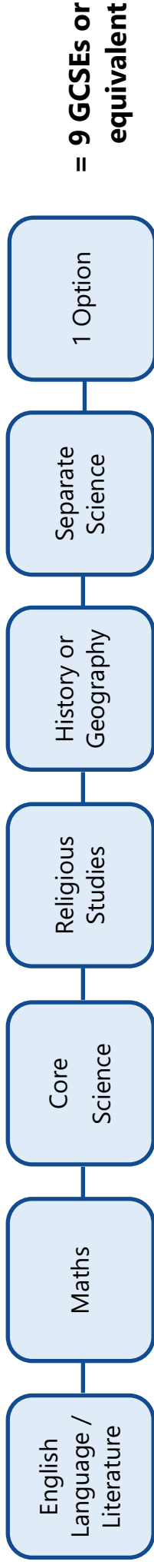
# SUMMARY

---

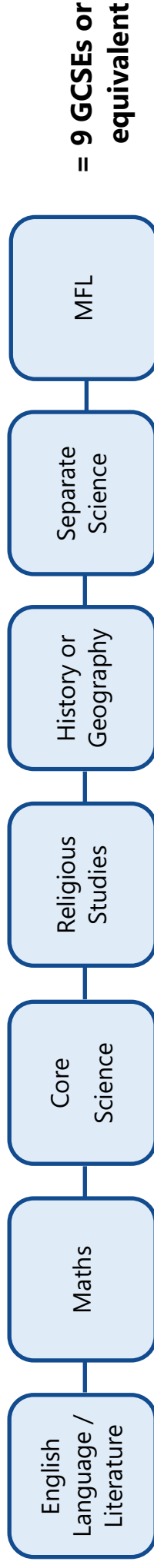
## **PATHWAY 1: ABLE LINGUIST**



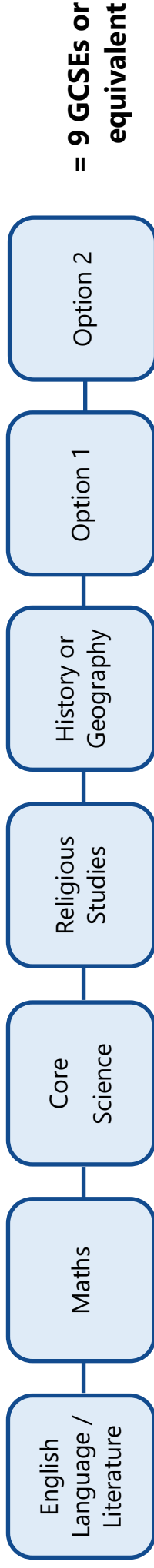
## **PATHWAY 2: SEPARATE SCIENTIST**



## **PATHWAY 3: ACADEMIC ROUTE**



## **PATHWAY 4: DOUBLE OPTION**





## A broad and balanced curriculum... ...something for everyone

### For the Maths Minded

- ♦ Maths
- ♦ Physics
- ♦ Computer Science
- ♦ Business Studies
- ♦ Further Maths (extra-curricular)



### For Creative Characters

- ♦ Fine Art
- ♦ Textiles
- ♦ Photography
- ♦ 3D Design
- ♦ iMedia (IT)
- ♦ Textiles



### For Socially Conscious Students

- ♦ English Literature
- ♦ Religious Studies
- ♦ History
- ♦ Sociology
- ♦ Geography
- ♦ PSHE
- ♦ Health & Social Care



### For Performing People

- ♦ Performing Arts
- ♦ Arts Award



### For Aspiring Academics

- ♦ Core Subjects
- ♦ Sociology
- ♦ Computer Science
- ♦ Business Studies



### For Sporty Souls

- ♦ Core PE
- ♦ BTEC Sport
- ♦ Sports Leaders
- ♦ Biology



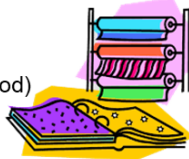
### For Enterprise Experts

- ♦ Business Studies
- ♦ Enterprise and Marketing
- ♦ Geography
- ♦ Hospitality & Catering (Food)
- ♦ Careers Programme



### For Practical People

- ♦ 3D Design
- ♦ Textiles
- ♦ Hospitality & Catering (Food)
- ♦ iMedia (IT)
- ♦ Chemistry



### For The Teenage Traveller

- ♦ Geography
- ♦ MFL
- ♦ Religious Studies
- ♦ English
- ♦ Travel & Tourism



### For Literate Learners

- ♦ English Language & Literature
- ♦ MFL / Home Language
- ♦ Film Studies
- ♦ Sociology
- ♦ History
- ♦ Performing Arts



### Alternative Curriculum

- ♦ Rebuild
- ♦ Jewellery-Making
- ♦ Boxing
- ♦ Work Experience
- ♦ Allotment
- ♦ ASDAN
- ♦ Swimming
- ♦ Cookery



# SUPPORTING STUDENTS

---

Each student will meet one of our options team to support their decision making process. If you are confident about your child's decision, you can complete the slip below and hand it in this evening.

A member of the team will still meet with your child, to check that the right choice has been made.

---

Name: \_\_\_\_\_ Tutor Group: \_\_\_\_\_

Pathway: \_\_\_\_\_

Choices:

**History or Geography**



**MFL or Option**



**Separate Science or  
Option**



**Reserve 1:** \_\_\_\_\_

**Reserve 2:** \_\_\_\_\_

Parental Signature: \_\_\_\_\_